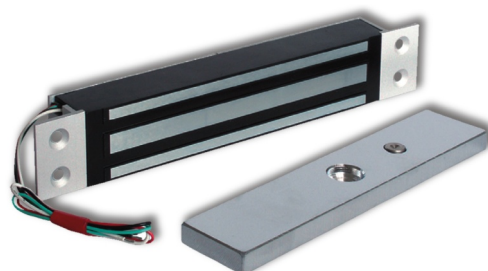


BUILT-IN DOOR RETAINER ANTI-PANIC AND ACCESS EMERGENCY 2490N

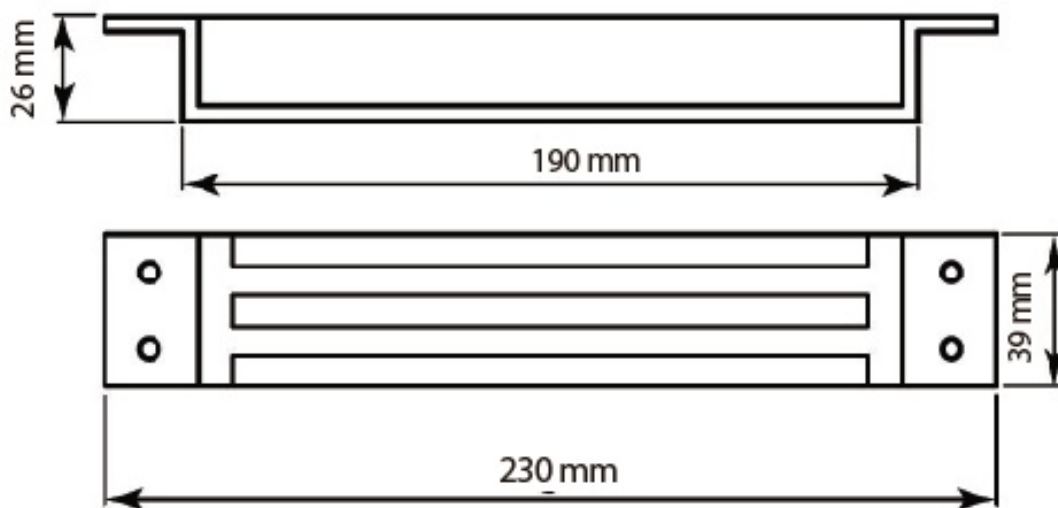
AE/V-RPE300E

Description

Retainer for emergency, panic and access doors to embed.
Keeps the door closed at rest.



Dimensions



TECHNICAL CHARACTERISTICS

Operating temperature:	-10°C + 55°C
Protection degree:	IP40
Power:	24Vdc
Consumption:	250mA
Clamping force:	300Kg / 250A